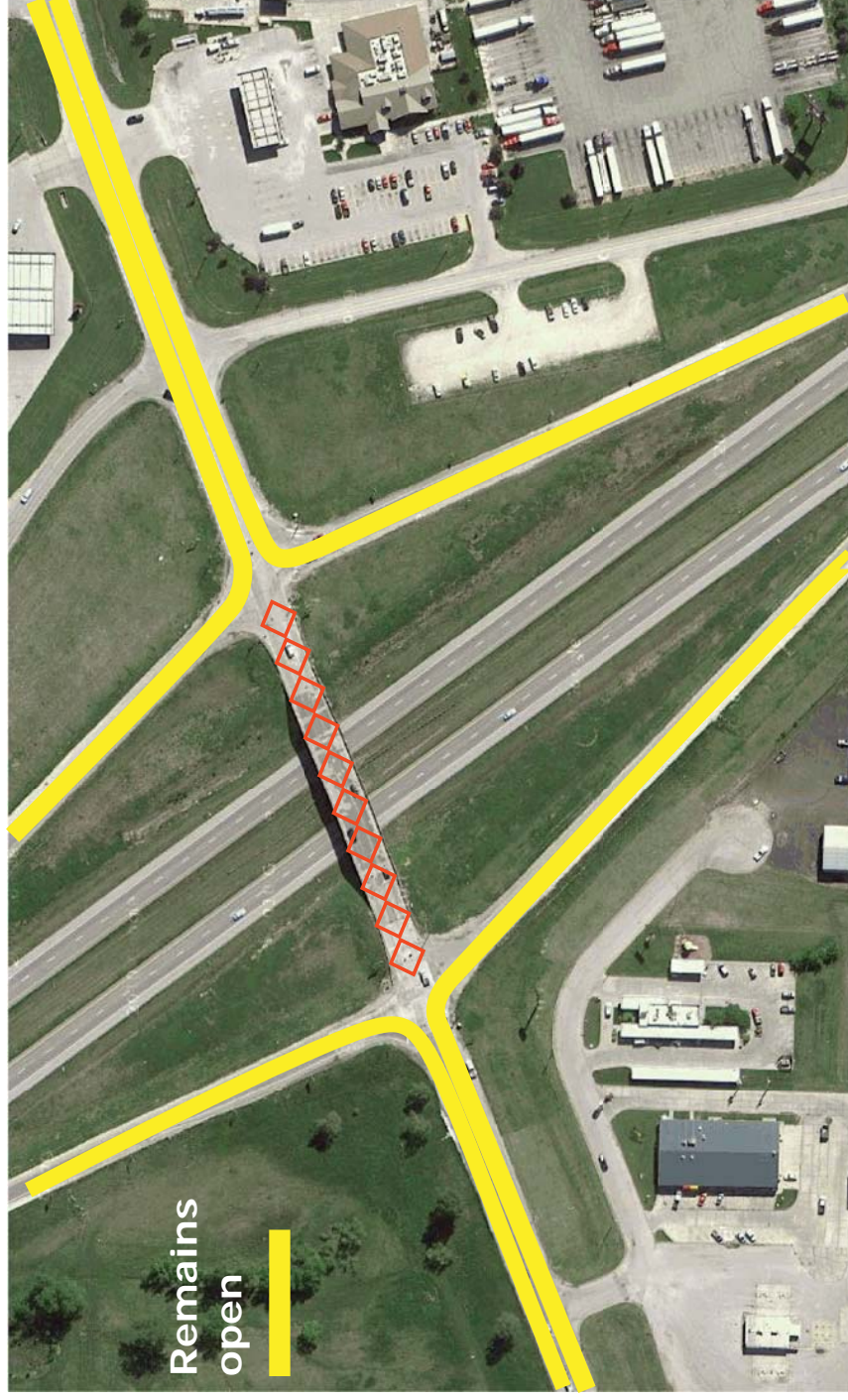


# Route 71 at Peculiar

*Redecking, widening a bridge at Routes J and C in Cass County*



Full bridge closure keeps all ramps open but prevents east-west crossing on the bridge for 40 days or less. Temporary crossovers at the end of ramps accommodate emergency response.



## Contact Us!

MoDOT Area  
Engineer Matt  
Killion is your  
best source  
for information  
regarding Cass  
County projects.  
Call Matt at 622-  
0500 or by cell  
phone at 215-  
7274. Also find  
us on the Web at  
[www.modot.org/  
kc](http://www.modot.org/kc).

# road notes

Route 71  
Interchange  
at Route J/C  
project news  
from the  
Missouri  
Department of  
Transportation  
December  
2011

# Route 71 at Peculiar

*Redecking, widening a bridge at Routes J and C*

The Route J and C bridge deck over Route 71 is deteriorating. Repeated patching by maintenance crews cannot provide a durable, smooth driving surface. A major deck removal and replacement will fix this bridge for decades to come.

MoDOT plans to completely remove the bridge deck over Route 71 at Peculiar, fully replace the deck and barrier rail with new concrete and add a five-foot-wide, barrier-protected sidewalk on the north side. This extensive work requires weeks of construction and either half or full bridge closure for weeks at a time. Closure requires detours, but keeping one lane open will be nearly as disruptive.

## Keeping one lane open:

- Traffic would be restricted to one direction at a time for 90 days or less.
- All ramps remain open: Northbound on and off; southbound on and off.
- One lane of the bridge remains open, but it will be a single, narrow lane controlled by a traffic signal on each side of the bridge.
- Expect long delays, particularly during evening peak period traffic.
- Semi trucks attempting to turn at the bridge further slow traffic.
- Most large trucks forego the exit because maneuvering is difficult.
- To maximize safety, long periods of one-way traffic are necessary to accommodate morning and evening rush hour if the bridge remains open.
- Cross traffic (east-west access) is reduced or halted during evening peak periods to minimize ramp traffic backing up into southbound mainline Route 71 lanes.
- Emergency vehicles will be delayed at the bridge, especially during peak hours.
- Keeping a lane open may affect two summer holidays and part of the school year.
- Traffic impacts are less predictable.

## Full closure of the bridge:

- Maximizes safety by eliminating long lines of traffic queueing at the bridge.
- Limits construction - and closure - to 40 days or less.
- Free-flowing right turns for northbound and southbound ramps. No lefts allowed.
- Disruption to the community minimized by quick completion.
- Closure begins after community festivals, Independence Day holiday.
- Bridge reopens before school starts - minor interference with schools or programs.
- Provides the best, longest lasting structure that pushes back future repairs for as long as possible.
- Commuters experience only one detour per day.
- Temporary crossovers will be built at the end of the north and south ramps for emergency vehicle access.
- Traffic impacts are more predictable.



# Phased Construction

Typical southbound afternoon traffic going to east Peculiar may restrict westbound Route C/J traffic for long periods. Traffic signal at bridge will remain green to move all vehicles off mainline Route 71. Westbound traffic will halt at red signal for long periods.

Cars   
Trucks 

